

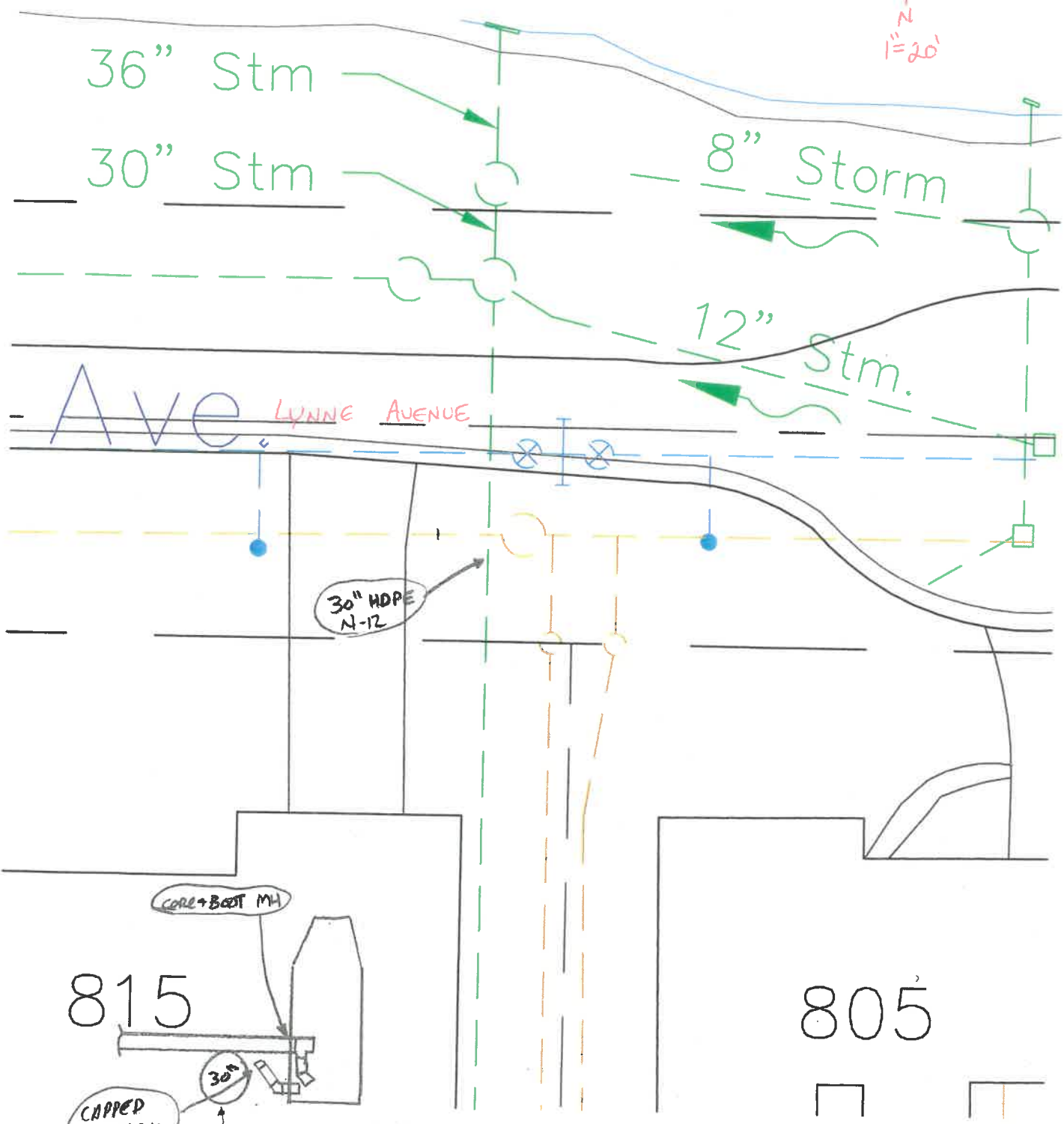
DATE: 8-3-17

INSTALLED BY: VERNON NAERL, INC.

INSPECTED BY: MARTY CROSSLAND

LYNNE AVENUE

EMERGENCY SANITARY
SEWER REPAIR



INTERNAL DROP
 8" x 8" x 8" PVC Tee.
 4' 8" PVC
 8" - 45° PVC BAND